



# REGENERATIVE MEDICINE PRACTICAL REVIEW AND HANDS-ON WORKSHOP

UP TO 17.5 AMA PRA CATEGORY 1 CREDITS™  
NOVEMBER 20-21, 2015 | LAS VEGAS, NV



# HANDS-ON CADAVER WORKSHOP FOR IPM TECHNIQUES

UP TO 8.5 AMA PRA CATEGORY 1 CREDITS™  
INCLUDING ONLINE VIDEO LECTURES  
NOVEMBER 21, 2015 | LAS VEGAS, NV

*American Society of* **Interventional Pain Physicians**  
The Voice of Interventional Pain Management

**HOST HOTEL:** THE VENETIAN RESORT HOTEL CASINO, 3355 Las Vegas Blvd. South, Las Vegas, NV 89109  
Hotel: 702.414.1000 | Reservations: 866.659.9643 | <http://www.venetian.com>  
**CADAVER WORKSHOP:** OQUENDO CENTER, 2425 E. Oquendo Road, Las Vegas, NV 89120  
Phone: 702.739.6698 | Toll Free: 866.800.7326 | <http://www.oquendocenter.org>  
**SPECIALS:** • Special room rates through October 29 • 50% Off Meeting Fee to Fellows & Residents

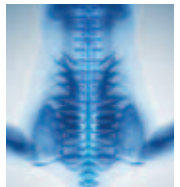


**HOST HOTEL:** THE VENETIAN RESORT HOTEL CASINO, 3355 Las Vegas Blvd. South, Las Vegas, NV 89109  
Hotel: 702.414.1000 | Reservations: 866.659.9643 | <http://www.venetian.com>  
**CADAVER WORKSHOP:** OQUENDO CENTER, 2425 E. Oquendo Road, Las Vegas, NV 89120  
Phone: 702.739.6698 | Toll Free: 866.800.7326 | <http://www.oquendocenter.org>  
**SPECIALS:** • Special room rates through October 29 • 50% Off Meeting Fee to Fellows & Residents

**REGENERATIVE MEDICINE  
PRACTICAL REVIEW AND  
HANDS-ON WORKSHOP**  
UP TO 17.5 AMA PRA CATEGORY 1 CREDITS™  
NOVEMBER 20-21, 2015 | LAS VEGAS, NV



**HANDS-ON  
CADAVER WORKSHOP  
FOR IPM TECHNIQUES**  
UP TO 8.5 AMA PRA CATEGORY 1 CREDITS™  
INCLUDING ONLINE VIDEO LECTURES  
NOVEMBER 21, 2015 | LAS VEGAS, NV



*American Society of*  
**Interventional Pain Physicians**  
81 Lakeview Drive, Paducah, KY 42001  
The Voice of Interventional Pain Management



PRSR1 STD  
U.S. POSTAGE  
**PAID**  
PADUCAH, KY  
PERMIT #44

**DESCRIPTION**

You can attend the two-day Regenerative Medicine Review and Hands-on Workshop or the one-day Hands-On Cadaver Workshop for IPM Techniques course. Participants will experience a comprehensive and intense learning opportunity, focusing on interventional pain management techniques in both courses.

**TARGET AUDIENCE/PURPOSE**

These comprehensive review courses in interventional techniques are targeted to interventional pain physicians seeking CME credit hours and introduction or review of proven interventional techniques, as well as skills improvement and/or to fulfill CME hours.

**OBJECTIVES**

**OBJECTIVES FOR REGENERATIVE MEDICINE COURSE**

- Attain understanding of regenerative medicine.
- Attain eligibility for competency certification with the completion of both levels.
- Incorporate regenerative medicine in treating your patients so that patients have better outcomes and reduced side effects.
- Provide high-quality, competent, safe, accessible, and cost-efficient services to your patients.

**OBJECTIVES FOR CADAVER WORKSHOP FOR IPM TECHNIQUES**

- Integrate multiple aspects of interventional pain management in treating your patients so that patients have better outcomes and reduced side effects.
- Provide high-quality, competent, safe, accessible, and cost-efficient services to your patients.
- Improve existing skills and/or develop new skills in the delivery of interventional techniques.
- Review multiple areas of interventional pain management including fluoroscopic interpretation

**PURPOSE AND TARGET AUDIENCE**

**REGENERATIVE MEDICINE PRACTICAL REVIEW AND HANDS-ON WORKSHOP**

This two-day, comprehensive review course and hands-on workshop in Regenerative Medicine is designed to provide interventional pain physicians with the ability to understand ultrasound interpretation and regenerative medicine. This course is an essential component for interventional pain physicians and provides education opportunities to assist you in providing high-quality, competent, safe, accessible, and cost-efficient services to your patients.

**HANDS-ON CADAVER WORKSHOP FOR IPM TECHNIQUES**

During this 1 day meeting, interventional pain physicians can improve existing skills and/or learn new skills and techniques. The comprehensive cadaver workshop is also planned to provide necessary CME credits and/or as an in-depth review of interventional techniques. Participants will experience a comprehensive and intense learning opportunity focusing either on basic, intermediate or ABIPP Examination preparation. Included are online lectures to aid in the understanding of and delivery of specific interventional techniques.

- Each cadaver station is limited to a maximum of 7 participants.
- Participants can choose the level of participation: basic, intermediate, or ABIPP Preparation
- C-arms and state-of-the-art equipment are utilized in this course. Participants are requested to dress in casual attire or scrubs. Leaded aprons and thyroid shields will be provided. However, participants are advised to bring their own protective eyewear.
- Participants will be provided with 7 video lectures relevant to the course material.

**ACCREDITATION STATEMENT**

These CME activities have been planned and implemented in accordance with the Essential Areas and Policies of the Accreditation Council for Continuing Medical Education through the joint providership of The Institute for Medical Studies and the American Society of Interventional Pain Physicians. The Institute for Medical Studies is accredited by the ACCME to provide continuing medical education for physicians. As a part of the course, participants will be provided with 7 video lectures designed to add to their learning experience.

**CATEGORY I CREDIT**

The Institute for Medical Studies designates the Regenerative Medicine Practical Review and Hands-on Workshop live activity for a maximum of up to 17.5 AMA PRA Category 1 Credits™ and the Hands-on Cadaver Workshop for IPM Techniques live activity for a maximum of up to 8.5 AMA PRA Category 1 Credits™. Physicians should only claim credit commensurate with the extent of their participation in the activity.

**AMERICANS WITH DISABILITIES ACT & SPECIAL SERVICES**

Organizers fully comply with the legal requirements of the Americans with Disabilities Act and the rules and regulations thereof. If any participant in these educational activities is in need of accommodations, please contact the organizers at (270) 554-9412 at least 10 days prior to each conference.

**CADAVER WORKSHOP SITE**

OQUENDO CENTER, 2425 E. Oquendo Road, Las Vegas, NV 89120  
 Phone: 702.739.6698 | Toll Free: 866.800.7326 | <http://www.oquendocenter.org>

**THERE IS NO COMMERCIAL SUPPORT FOR THIS COURSE. NO DUPLICATION OR DISTRIBUTION OF MATERIALS, OR RECORDING OF LECTURES ASSOCIATED.**

# CADAVER LAB COURSE LEVELS

BASIC	INTERMEDIATE	ABIPP PREPARATION
1. Sacroiliac joint interventions 2. Lumbar interlaminar epidural injections 3. Lumbar transforaminal epidural injections 4. Lumbar facet joint nerve blocks 5. Lumbar facet radiofrequency neurotomy 6. Caudal epidural injections	1. Cervical and thoracic interlaminar epidurals 2. Cervical facet joint interventions (medial branch blocks, and radiofrequency neurotomy) 3. Thoracic facet interventions (medial branch blocks, and radiofrequency neurotomy) 4. Lumbar discography and adhesiolysis 5. Lumbar sympathetic blocks and hypogastric plexus blocks 6. Lumbar facet joint nerve blocks and radiofrequency neurotomy	1. Cervical facet joint interventions (medial branch blocks and radiofrequency neurotomy) and cervical interlaminar epidural injections 2. Thoracic facet joint interventions (medial branch blocks and radiofrequency neurotomy), intercostal nerve blocks, and thoracic interlaminar epidural injections 3. Lumbar facet joint interventions (facet joint nerve blocks, and radiofrequency neurotomy) and sacroiliac joint injections 4. Caudal epidural, interlaminar epidural, transforaminal, and percutaneous adhesiolysis 5. Spinal cord stimulation lead placement and lumbar discography 6. Sympathetic blockade (stellate ganglion, lumbar sympathetic blocks and celiac plexus blocks)

## REGENERATIVE MEDICINE PRACTICAL REVIEW AND HANDS-ON WORKSHOP

### NOVEMBER 20 FRIDAY

7:00am–7:30am	REGISTRATION AND BREAKFAST
7:30am–8:00am	Introduction to ASIPP and Workshop - <b>Laxmaiah Manchikanti, MD</b>
8:00am–9:10am	Ultrasound for Regenerative Medicine – <b>George Chang Chien, DO</b>
9:10am–10:15am	Regenerative Medicine – <b>Aaron K. Calodney, MD</b>
10:15am–10:45am	BREAK
10:45am–11:30am	Business Topic - <b>Christy Davies, MBA</b>
11:30am–12:30pm	Rotation 1
12:30pm–1:30pm	LUNCH
1:30pm–2:30pm	Rotation 2
2:30pm–3:00pm	BREAK
3:00pm–3:30pm	Marketing Lecture - <b>Dan Crane, MBA</b>
3:30pm–4:30pm	Rotation 3
4:30pm–5:30pm	Free Form Rotation and Q&A

#### Stations:

Regenerative Medicine – PRP and Stem Cells  
Upper extremity ultrasound for regenerative medicine  
Lower extremity ultrasound for regenerative medicine

### NOVEMBER 21 SATURDAY

7:15am	Shuttles depart from hotel to the cadaver facility
7:30am–8:00am	REGISTRATION AND BREAKFAST
8:00am–9:00am	Introduction- <i>Laxmaiah Manchikanti, MD</i>
9:00am–9:20am	Ultrasound Needle Techniques – <b>George Chang Chien, MD</b>
9:20am–12:45pm	<b>Regenerative Medicine Workshop</b>
12:45pm–1:45pm	LUNCH PRESENTATION- Spine's next frontier: Biologics and Regenerative Medicine - <b>Annu Navani, MD</b>
1:45pm–5:30pm	<b>Regenerative Medicine Workshop</b>
5:30pm	Shuttles depart from cadaver facility to Airport and The Hotel

## HANDS-ON CADAVER WORKSHOP FOR IPM TECHNIQUES

### NOVEMBER 21 SATURDAY

7:15am	Shuttles depart from hotel to the cadaver facility
7:30am–8:00am	REGISTRATION AND BREAKFAST
8:00am–9:00am	Introduction- <i>Laxmaiah Manchikanti, MD</i>
9:00am–12:45pm	<b>Hands-on Cadaver Workshop</b>
12:45pm–1:45pm	LUNCH PRESENTATION- Spine's next frontier: Biologics and Regenerative Medicine - <b>Annu Navani, MD</b>
1:45pm–5:30pm	<b>Hands-on Cadaver Workshop</b>
5:30pm	Shuttles depart from cadaver facility to Airport and The Hotel

### COURSE DIRECTORS

#### Laxmaiah Manchikanti, MD

Chief Executive Officer and Chairman of the Board, ASIPP  
Medical Director, Pain Management Center of Paducah  
Paducah, KY  
Clinical Professor of Anesthesiology and  
Perioperative Medicine  
University of Louisville  
Louisville, KY

#### Peter S. Staats, MD

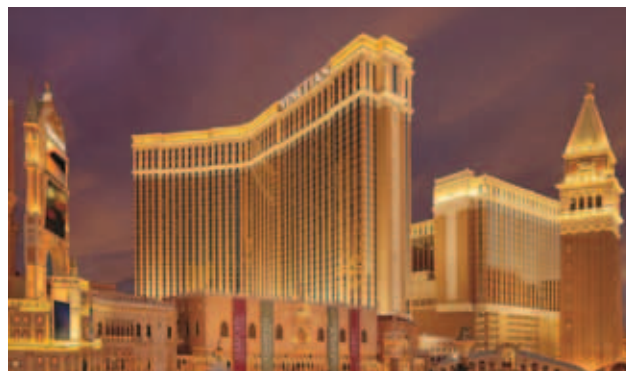
President, ASIPP  
Premier Pain Centers, LLC  
Shrewsbury, NJ  
Adjunct Associate Professor in the Department of  
Anesthesiology and Critical Care Medicine and the  
Department of Oncology  
Johns Hopkins University  
School of Medicine  
Baltimore, MD

#### Aaron K. Calodney, MD

President-Elect, ASIPP  
Director of Clinical Research  
Precision Spine Care  
Texas Spine and Joint Hospital  
Tyler, TX

#### George Chang-Chien, DO

Director of Pain Medicine  
Ventura County Medical Center  
Ventura, CA



### ACCOMMODATIONS

THE VENETIAN RESORT HOTEL CASINO  
3355 Las Vegas Blvd. South, Las Vegas, NV 89109  
Hotel: 702.414.1000 | Reservations: 866.659.9643  
<http://www.venetian.com>

Combining unrivaled travel and logistical convenience, award-winning service, vast, flexible meeting space, eco-friendly LEED certifications and universal appeal for guests, and you start to understand why this is Las Vegas' preferred meeting venue.

**Inform the agent that you are booking for American Society of Interventional Pain Physicians. We have secured a group rate of \$159. Register early, as all unbooked rooms will be released on October 29, 2015 or until sold out, whichever occurs first.**

# REGISTRATION

## REGISTRANT INFORMATION

**IMPORTANT.** Please answer all the questions:

### PRIMARY SPECIALTY CERTIFICATION:

- Anesthesiology     Physiatry  
 Neurosurgery  
 Other: \_\_\_\_\_

### PAIN MEDICINE SUBSPECIALTY CERTIFICATION:

- ABMS Pain Medicine (Anesthesiology, PMR, Neurology, Psychiatry, Emergency Medicine)  
 American Board of Pain Medicine  
 American Board of Interventional Pain Physicians  
 Fellow of Interventional Pain Practice (FIPP)

### SPECIALTY DESIGNATION:

- 09 - Interventional Pain Management  
 72 - Pain Management  
 Other: \_\_\_\_\_

### PERCENTAGE OF INTERVENTIONAL PAIN MANAGEMENT PRACTICE:

- 0%    1-25%    26-50%    51-75%    > 75%

### YEARS IN INTERVENTIONAL PAIN MANAGEMENT PRACTICE:

- 0    1-5    6-10    > 10

### MEDICAL DEGREE:

- MD    DO  
 Additional: \_\_\_\_\_

### CADAVER COURSE LEVEL

- Basic    Intermediate    ABIPP Preparation

### TOTAL NUMBER OF PROCEDURES PERFORMED DURING PAST YEAR:

LOCATION	ASC	HOPD	Office
Caudal Epidural	_____	_____	_____
Stellate Ganglion Blocks	_____	_____	_____
Thoracic Sympathetic Blocks	_____	_____	_____
Lumbar Sympathetic Blocks	_____	_____	_____
Lumbar Facet Joint Blocks	_____	_____	_____
Thoracic Radiofrequency	_____	_____	_____
Thoracic Interlaminar	_____	_____	_____
Cervical Interlaminar	_____	_____	_____
Epidurals	_____	_____	_____
Cervical Facet Joint Blocks	_____	_____	_____
Cervical Radiofrequency	_____	_____	_____
Thoracic Joint Blocks	_____	_____	_____
Thoracic Radiofrequency	_____	_____	_____
Lumbar Radiofrequency	_____	_____	_____
Lumbar Transforaminal	_____	_____	_____
Epidural	_____	_____	_____
Hypogastric Plexus	_____	_____	_____
Sacroiliac Joint Injections	_____	_____	_____
Pyriformis Block	_____	_____	_____
Percutaneous Adhesiolysis	_____	_____	_____

PLEASE PRINT EXACTLY AS YOU WISH YOUR NAME TO APPEAR:

NAME (FIRST) (MIDDLE INITIAL) (LAST) (DEGREE)

ORGANIZATION

ADDRESS

CITY STATE ZIP COUNTRY

PHONE FAX

E-MAIL

## Registration for Hands-on Cadaver Workshop for IPM Techniques

### Cadaver Course Level:

- Basic  
 Intermediate  
 ABIPP Preparation

### Hands-on Cadaver Workshop for IPM Techniques:

- \$ 1,800 (Member)  
 \$ 2,100 (Non-Member)  
 50% Fellow Discount\*\*\*

## Registration for 2-day Regenerative Medicine Workshop

### Regenerative Medicine Course Level:

- Basic/ Intermediate  
 Advanced

### Regenerative Medicine Review and Hands-on Cadaver Workshop

- \$ 2,400 (Member)  
 \$ 2,700 (Non-Member)  
 50% Fellow Discount\*\*\*

\*\*\* If registering as a fellow, please list below the name of fellowship program, university or hospital and fax or e-mail a letter from the program director verifying your status. Your application for registration cannot be processed and you will not receive the 50% discount until ASIPP receives this letter. Fax the letter to 270-554-5394 or e-mail to [crogers@asipp.org](mailto:crogers@asipp.org)

NAME OF FELLOWSHIP PROGRAM

### Payment Method (Please check one):

- MASTERCARD    VISA    AMERICAN EXPRESS    DISCOVER

CREDIT CARD NUMBER SECURITY CODE (Back of Card) EXP. DATE

NAME ON CARD

AUTHORIZED SIGNATURE (required on all credit card orders)

(Your application will not be processed if payment does not accompany registration form)

### RETURN COMPLETED FORM TO:

ASIPP, 81 Lakeview Drive, Paducah, KY 42001 or Fax to (270) 554-5394

### CANCELLATION POLICY:

ASIPP reserves the right to cancel this course upon reasonable notice and will assume no financial obligation to registrants for cancellation for reasons beyond its control. Registration fees will be refunded however, costs incurred by the registrants, such as airline or hotel fees or penalties, are the responsibility of the registrants. ASIPP requires a 30-day notice of cancellation. Cancellations must be submitted in writing by October 23, 2015. Cancellations after October 23, 2015 but prior to November 6, 2015, will forfeit 50% of their registration fee. No refunds can be made after November 6, 2015.